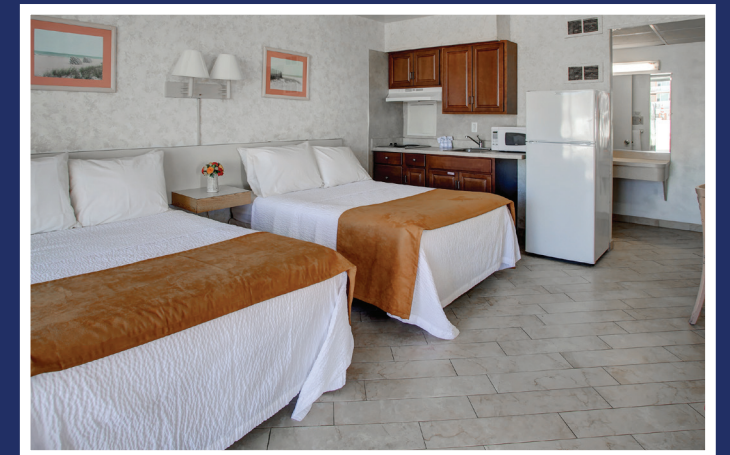
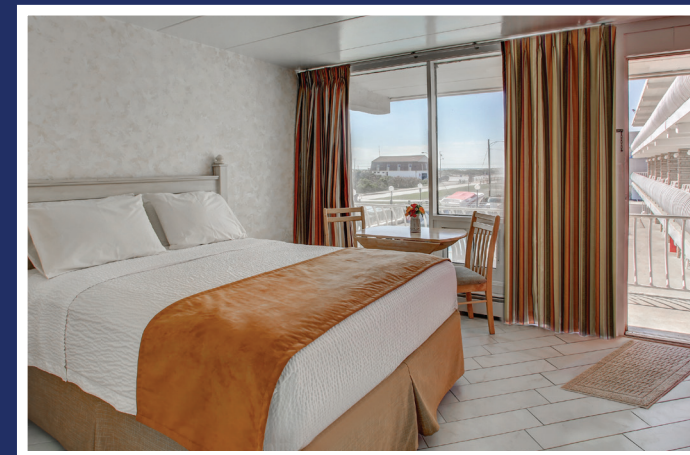


- All Non-Smoking Rooms
- FREE WIFI
- Fully Equipped Kitchen with Microwaves in Efficiencies
- Color Cable TV (2 in Suites)
- Refrigerators and Coffee Makers in all Units
- Family Friendly, Guaranteed a Clean and Courteous Atmosphere
- Elevator Service
- Located on the Oceanfront, just steps to the Wildwoods' Boardwalk (available upon request)
- In-Room Telephones
- Free Parking - 1 Car per Unit (Strictly Enforced)
- Daily Maid Service
- Restaurants & Churches in walking distance
- Crib Rental Available
- ADA Pool Lift
- Ironing Boards in All Rooms
- Coin Operated Laundry Facility
- Patio Tables and Lounge Chairs
- Ice Machine • ATM on premises
- 2 Oceanfront Sun Decks
- Outdoor Gas Grills
- Heated Pool/Separate Kiddie Pool
- Air Conditioning and Heat in all Units
- Irons, Blow Dryers & Blenders

★ **Features** ★



(DIRECTLY ON THE BEACH)  
510 E. 13TH AVENUE  
NORTH WILDWOOD, NJ 08260



**OCEANFRONT MOTEL & FAMILY RESORT • 2021**  
On the Beach at 510 E. 13th Avenue, North Wildwood, NJ 08260  
(609) 729-7700 • www.americaninn.com



# ★ AMERICAN INN SPECIALS ★

ALL SPECIALS ARE QUOTED FOR 4 PERSONS UNLESS OTHERWISE INDICATED • D UNITS MAXIMUM 2 PERSONS  
CHECK-IN AFTER 4 P.M.

**Mother's Day Weekend**  
& Classic Car Show  
May 7-9  
3 days/2 nights  
Breakfast for 2 Sat OR Sun  
**\$195 + tax**

**Captain Kidd's  
Family & Friends Weekend**  
May 14-16  
3 days/2 nights  
**\$219 + tax**

**Memorial Day  
Weekend**  
May 28-31  
4 days/3 nights  
**\$465 + tax** A Units  
**\$435 + tax** B & C Units  
Extra Person \$60.00 + tax

**Summer Kick-Off**  
June 11-13  
3 days/2 nights  
**\$389 + tax** A Units  
**\$325 + tax** B & C Units  
**\$250 + tax** D Units

**Father's Day Weekend**  
June 18 - 20  
3 days/2 nights  
Breakfast for 2 Sat OR Sun  
**\$409 + tax** A Units  
**\$369 + tax** B & C Units  
**\$355 + tax** D Units

**Labor Day Weekend**  
September 3-6  
4 days/3 nights  
**\$589+ tax** A Units  
**\$549 + tax** B, C & D Units  
Extra Person \$60.00 + tax

**NJ State Firemen's  
Convention**  
September 16 - 19  
4 days/3 nights  
**\$494 + tax**

**Irish Festival &  
Fall Car Show**  
September 24 - 27  
4 days/3 nights  
**\$524 + tax** A Units  
**\$474 + tax** B, C & D Units  
Extra Person \$45.00 + tax

**Fall Getaway**  
Surf Fishing Tournament  
October 1-3  
3 days/2 nights  
Breakfast for 2 Sat OR Sun  
Double Occupancy  
**\$259 + tax**  
Extra Person \$40.00 Includes Package

**May 17 - 21**  
5 days/4 nights  
A,B,C & D Units  
**\$260 + tax**

**May 24 - 28**  
5 days/4 Nights  
A Units - **\$359 + tax**  
B & C Units - **\$339 + tax**  
D Units - **\$325 + tax**

**May 31 - June 4**  
5 days/4 Nights  
A Units - **\$459 + tax**  
B & C Units - **\$439 + tax**  
D Units - **\$425 + tax**

**June 6 - 11**  
6 days/5 Nights  
A Units - **\$714+ tax**  
B & C Units - **\$657 + tax**  
D Units - **\$559 + tax**

**June 13 - 18**  
6 days/5 Nights  
A Units - **\$899 + tax**  
B & C Units - **\$719 + tax**  
D Units - **\$639 + tax**

**June 20 - June 25**  
6 days/5 Nights  
A Units - **\$999 + tax**  
B & C Units - **\$819 + tax**  
D Units - **\$739 + tax**

**June 28 - July 2**  
5 days/4 Nights  
A Units - **\$899 + tax**  
B & C Units - **\$798 + tax**  
D Units - **\$795 + tax**

**July 5 - 9**  
5 days/4 Nights  
A Units - **\$899 + tax**  
B & C Units - **\$798 + tax**  
D Units - **\$757 + tax**

**August 22 - 27**  
6 days/5 Nights  
A, B, C & D Units  
**\$909 + tax**

**August 29 - Sept 3**  
6 days/5 Nights  
A, B, C & D Units  
**\$789 + tax**

**Sept 6 - Sept 10**  
5 days/4 Nights  
A, B, C & D Units - **\$409 + tax**

**Sept 12 - Sept 16**  
5 days/4 Nights  
A, B, C & D Units - **\$390 + tax**

**Sept 19 - Sept 24**  
6 days/5 Nights  
A, B, C & D Units - **\$409 + tax**

**Sept 27 - October 1**  
5 days/4 Nights  
A, B, C & D Units - **\$264 + tax**

ALL SPECIALS SUBJECT TO AVAILABILITY • SPECIALS QUOTED FOR A, B OR C UNITS 4 PERSONS • RATES SUBJECT TO NJ STATE SALES TAX & LOCAL TOURISM TAX • 50% DEPOSIT ON ALL SPECIALS • BALANCE TO BE PAID IN CASH - NO EXCEPTIONS

- Credit/Debit card in guests name is required at check-in for security purposes.
- Payment in full is due upon arrival.
- **Deposit Requirements:**  
1 to 3 days rental: 1 night deposit  
4 to 7 days rental: 2 night deposit  
8 days or more: 30% deposit
- Deposit applies to your last night's stay.
- Personal checks will not be accepted for payment of final balances.
- **Specials: balance due in cash only. No exceptions.**
- **Brochure rates are discounted 3% for cash, traveler's checks & money orders. Visa, MasterCard, American Express & Discover are accepted, however, there is a 3% charge due to the fact that you are not taking advantage of the discounted rate for cash.**
- Deposits refunded if notified in writing two weeks in advance of arrival date, subject to a 25% service charge.

- Cancellations must be made by contacting the motel directly. No cancellations will be honored when made via Social Media (facebook, twitter, ect.).
- Deposits not transferable to future reservations.
- No refunds due to weather or early checkout.
- All rates subject to New Jersey Sales and Tourism.
- Reservations held until 7pm unless otherwise notified.
- Rates listed apply only to advance reservations.
- Misrepresentation voids reservation, and will be subject to forfeiture of all amounts prepaid.
- **One parking space per unit, strictly enforced.** No bicycles in rooms. No roller blading, skateboarding, or scooters on premises.
- As a matter of public health safety, children who are not fully potty trained must wear a "swim diaper" in pool.
- Sorry, **NO PETS**
- **NO SMOKING IN ROOMS - STRICTLY ENFORCED!**

Motel Policies

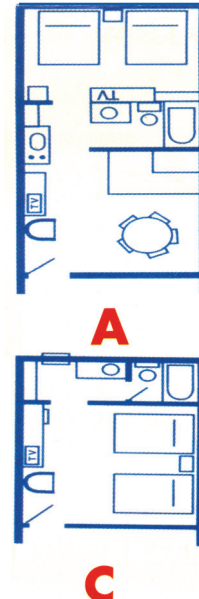
RATES APPLY TO ADVANCE CASH RESERVATIONS ONLY

# ★ 2021 RATE SCHEDULE ★

Reservations Only (Toll Free):  
1-866-987-2466

Off Season & All Other Business:  
609-729-7700

Accommodation Choices	May 6 to May 13	May 14 to May 29	May 30 to June 5	June 6 to June 12 Memorial Day Weekend	June 13 to Sept. 5 Labor Day Weekend & Irish Festival	Sept. 6 to Closing
<b>A</b> 2 Room Oceanfront Efficiency Suite <small>* All 3rd Floor Units are an additional \$10 per night</small>	\$103 2 persons	\$118 2 persons	\$153 4 persons	\$200 4 persons	\$250 5 persons	\$135 2 persons
<b>B</b> 1 Room North View Efficiency, 2 Double Beds	\$88 2 persons	\$113 2 persons	\$141 4 persons	\$170 4 persons	\$215 4 persons	\$130 2 persons
<b>C</b> Motel Room Oceanfront 2 Double Beds	\$87 2 persons	\$111 2 persons	\$138 4 persons	\$168 4 persons	\$212 4 persons	\$128 2 persons
<b>D</b> Motel Room Poolside 1 Queen Bed	\$83 2 persons	\$108 2 persons	\$126 2 persons	\$135 2 persons	\$195 2 persons	\$120 2 persons



ALL RESERVATIONS SUBJECT TO AVAILABILITY  
WEEKENDS JULY & AUGUST:

ANY 3 NIGHT STAY OR LESS THAT INCLUDES A SATURDAY ADD \$20 PER NIGHT

- Extra Person: \$15 per day • D Unit always maximum 2 persons
- Rates shown for advanced reservations only and DO NOT apply to Weekends, Holidays, Conventions or Groups & Subject to Availability • Rates subject to NJ state tax and local tourism tax

ALL CHECK INS AFTER 4:00 PM

## RESERVATION REQUEST

CHECK OUT: 10:00 AM

NAME (PLEASE PRINT) \_\_\_\_\_ PHONE/MOBILE \_\_\_\_\_

ADDRESS \_\_\_\_\_ EMAIL: \_\_\_\_\_

CITY \_\_\_\_\_ STATE \_\_\_\_\_ ZIP \_\_\_\_\_

PLEASE RESERVE:  UNIT A  UNIT B  UNIT C  UNIT D

FOR MY PARTY OF \_\_\_\_\_ RATE PER DAY \$ \_\_\_\_\_ WE WILL ARRIVE ON \_\_\_\_\_ DEPART ON \_\_\_\_\_

REMARKS \_\_\_\_\_

DEPOSIT \$ \_\_\_\_\_ SIGNATURE \_\_\_\_\_ DATE \_\_\_\_\_

**Reservation Deposit Required:** Full deposit due within 10 days of making reservation or it will be canceled. 1-3 nights; 1 night deposit, 4-7 nights; 2 night deposit, 8 nights or more; 30% deposit required to confirm reservations. Brochure rates are discounted 3% for cash, traveler's checks & money orders. Visa, Mastercard, American Express & Discover are accepted, however there is a 3% charge due to the fact that you are not taking advantage of the discounted rate for cash. Deposit is only refundable if notified 14 days or more in advance of arrival date and all refunds are subject to a 25% service charge. Deposits are non-transferable. No refunds for early departures. **Balance Due Upon Arrival.** Confirmed Reservations are held until 7 PM on day of arrival unless office is notified. **PLEASE NOTE:** All reservations are subject to confirmations. We are not responsible for causes or conditions beyond our control.

Detach this form and mail with payments to: American Inn • 510 East 13th Avenue, North Wildwood, NJ 08260